



Indoor Linear Collection

Indoor Lighting

ACUMEN

www.acumenlight.com

Indoor linear lighting delivers modern, uniform illumination with high visual comfort and an elegant form. It offers multiple diffuser options and flexible installation, whether surface mounted, suspended, or recessed making it ideal for offices, commercial areas, corridors, and residential spaces.



Honeycomb

INDOOR LINEAR

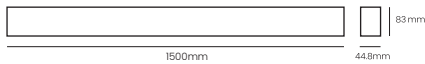
Surface Mounted | Suspended

ACU IL 240101SM



Wattage	Beam Angle
34W	60°x75°
Color Temperature	Lumen Output
3000k	2085 Lm
4000k	2195 Lm
Installation	Rated Life Hours
Surface Mounted - Suspended	30,000 - 50,000H
CRI	Colors
≥90	■ Black
Input Voltage	Material
220V AC (Via the Built In Driver)	Powder Coated Aluminum

ACU IL 240102SM

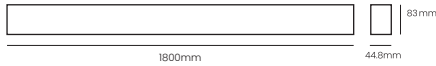


Wattage	Beam Angle
46W	60°x75°
Color Temperature	Lumen Output
3000k	2820 Lm
4000k	2965 Lm
Installation	Rated Life Hours
Surface Mounted - Suspended	30,000 - 50,000H
CRI	Colors
≥90	■ Black
Input Voltage	Material
220V AC (Via the Built In Driver)	Powder Coated Aluminum



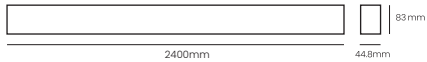
Surface Mounted | Suspended

ACU IL 240103SM



Wattage	Beam Angle
51W	60°x75°
Color Temperature	Lumen Output
3000k	3125 Lm
4000k	3290 Lm
Installation	Rated Life Hours
Surface Mounted - Suspended	30,000 - 50,000H
CRI	Colors
≥90	■ Black
Input Voltage	Material
220V AC (Via the Built In Driver)	Powder Coated Aluminum

ACU IL 240104SM



Wattage	Beam Angle
68W	60°x75°
Color Temperature	Lumen Output
3000k	4165 Lm
4000k	4385 Lm
Installation	Rated Life Hours
Surface Mounted - Suspended	30,000 - 50,000H
CRI	Colors
≥90	■ Black
Input Voltage	Material
220V AC (Via the Built In Driver)	Powder Coated Aluminum



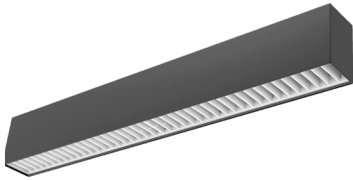
Louver

INDOOR LINEAR



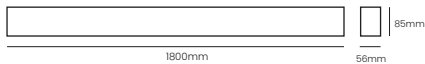
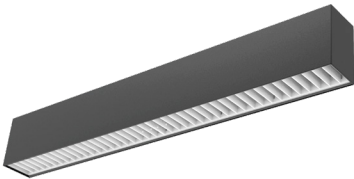
Surface Mounted | Suspended

ACU IL 240201SM



Wattage	Beam Angle
34W	72°
Color Temperature	Lumen Output
3000k	1760 Lm
4000k	1890 Lm
Installation	Rated Life Hours
Surface Mounted - Suspended	30,000 - 50,000H
CRI	Colors
≥90	■ Black
Input Voltage	Material
220V AC (Via the Built In Driver)	Powder Coated Aluminum

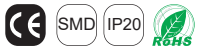
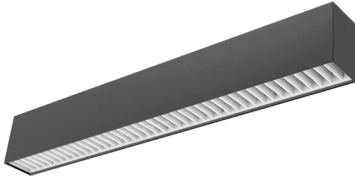
ACU IL 240202SM



Wattage	Beam Angle
51W	72°
Color Temperature	Lumen Output
3000k	2690 Lm
4000k	2830 Lm
Installation	Rated Life Hours
Surface Mounted - Suspended	30,000 - 50,000H
CRI	Colors
≥90	■ Black
Input Voltage	Material
220V AC (Via the Built In Driver)	Powder Coated Aluminum

Surface Mounted | Suspended

ACU IL 240203SM



Wattage	Beam Angle
---------	------------

68W	72°
-----	-----

Color Temperature	Lumen Output
-------------------	--------------

3000k	3550 Lm
4000k	3770 Lm

Installation	Rated Life Hours
--------------	------------------

Surface Mounted - Suspended	30,000 - 50,000H
-----------------------------	------------------

CRI	Colors
-----	--------

≥90	■ Black
-----	---------

Input Voltage	Material
---------------	----------

220V AC (Via the Built In Driver)	Powder Coated Aluminum
--------------------------------------	---------------------------



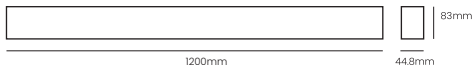
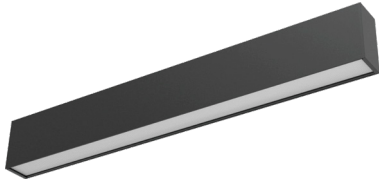
Prismatic Diffuser

INDOOR LINEAR



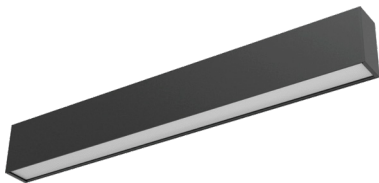
Surface Mounted | Suspended

ACU IL 240301SM



Wattage	Beam Angle
28W	72°
Color Temperature	Lumen Output
3000k	2745 Lm
4000k	2890 Lm
Installation	Rated Life Hours
Surface Mounted - Suspended	30,000 - 50,000H
CRI	Colors
≥90	■ Black
Input Voltage	Material
220V AC (Via the Built In Driver)	Powder Coated Aluminum

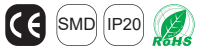
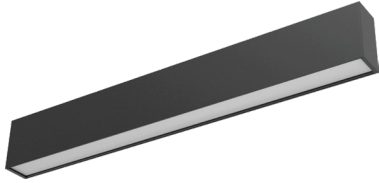
ACU IL 240302SM



Wattage	Beam Angle
34W	65°x70°
Color Temperature	Lumen Output
3000k	3335 Lm
4000k	3510 Lm
Installation	Rated Life Hours
Surface Mounted - Suspended	30,000 - 50,000H
CRI	Colors
≥90	■ Black
Input Voltage	Material
220V AC (Via the Built In Driver)	Powder Coated Aluminum

Surface Mounted | Suspended

ACU IL 240303SM



Wattage

40W

Beam Angle

65°x70°

Color Temperature

3000k

4000k

Lumen Output

3920 Lm

4130 Lm

Installation

Surface Mounted - Suspended

Rated Life Hours

30,000 - 50,000H

CRI

≥90

Colors

■ Black

Input Voltage

220V AC
(Via the Built In Driver)

Material

Powder Coated
Aluminum





Recessed

INDOOR LINEAR



Recessed

ACU IL 240401R



Wattage	Beam Angle
---------	------------

19W	110°
-----	------

Color Temperature	Lumen Output
-------------------	--------------

3000k	1900 Lm
4000k	2020 Lm

Installation	Rated Life Hours
--------------	------------------

Recessed	30,000 - 50,000H
----------	------------------

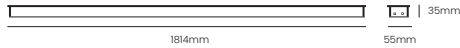
CRI	Colors
-----	--------

≥90	■ Black
-----	---------

Input Voltage	Material
---------------	----------

220V AC (Via the External Attached Driver)	Powder Coated Aluminum
---	---------------------------

ACU IL 240402R



Wattage	Beam Angle
---------	------------

27W	110°
-----	------

Color Temperature	Lumen Output
-------------------	--------------

3000k	2700 Lm
4000k	2870 Lm

Installation	Rated Life Hours
--------------	------------------

Recessed	30,000 - 50,000H
----------	------------------

CRI	Colors
-----	--------

≥90	■ Black
-----	---------

Input Voltage	Material
---------------	----------

220V AC (Via the External Attached Driver)	Powder Coated Aluminum
---	---------------------------

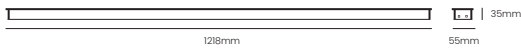
Recessed

ACU IL 240403R



Wattage	Beam Angle
38W	110°
Color Temperature	Lumen Output
3000k	3800 Lm
4000k	4040 Lm
Installation	Rated Life Hours
Recessed	30,000 - 50,000H
CRI	Colors
≥90	■ Black
Input Voltage	Material
220V AC (Via the External Attached Driver)	Powder Coated Aluminum

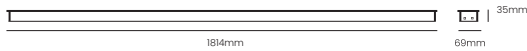
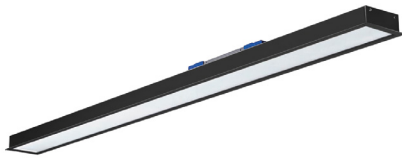
ACU IL 240404R



Wattage	Beam Angle
27W	110°
Color Temperature	Lumen Output
3000k	2800 Lm
4000k	2980 Lm
Installation	Rated Life Hours
Recessed	30,000 - 50,000H
CRI	Colors
≥90	■ Black
Input Voltage	Material
220V AC (Via the External Attached Driver)	Powder Coated Aluminum

Recessed

ACU IL 240405R



Wattage	Beam Angle
38W	110°
Color Temperature	Lumen Output
3000k	3950 Lm
4000k	4200 Lm
Installation	Rated Life Hours
Recessed	30,000 - 50,000H
CRI	Colors
≥90	■ Black
Input Voltage	Material
220V AC (Via the External Attached Driver)	Powder Coated Aluminum

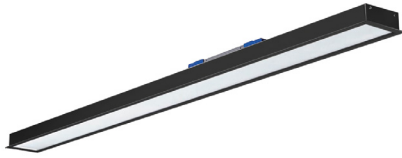
ACU IL 240406R



Wattage	Beam Angle
53W	110°
Color Temperature	Lumen Output
3000k	5510 Lm
4000k	5860 Lm
Installation	Rated Life Hours
Recessed	30,000 - 50,000H
CRI	Colors
≥90	■ Black
Input Voltage	Material
220V AC (Via the External Attached Driver)	Powder Coated Aluminum

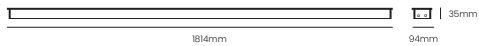
Recessed

ACU IL 240407R



Wattage	Beam Angle
38W	110°
Color Temperature	Lumen Output
3000k	3950 Lm
4000k	4200 Lm
Installation	Rated Life Hours
Recessed	30,000 - 50,000H
CRI	Colors
≥90	■ Black
Input Voltage	Material
220V AC (Via the External Attached Driver)	Powder Coated Aluminum

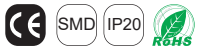
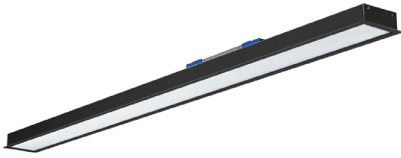
ACU IL 240408R



Wattage	Beam Angle
60W	110°
Color Temperature	Lumen Output
3000k	6230 Lm
4000k	6630 Lm
Installation	Rated Life Hours
Recessed	30,000 - 50,000H
CRI	Colors
≥90	■ Black
Input Voltage	Material
220V AC (Via the External Attached Driver)	Powder Coated Aluminum

Recessed

ACU IL 240409R



Wattage	Beam Angle
---------	------------

75W	110°
-----	------

Color Temperature	Lumen Output
-------------------	--------------

3000k	7790 Lm
4000k	8290 Lm

Installation	Rated Life Hours
--------------	------------------

Recessed	30,000 - 50,000H
----------	------------------

CRI	Colors
-----	--------

≥90	■ Black
-----	---------

Input Voltage	Material
---------------	----------

220V AC (Via the External Attached Driver)	Powder Coated Aluminum
---	---------------------------

